

# BERKOWITZOLIVER



**Kathleen M. Nemechek**

## Partner

816.627.0221  
knemechek@berkowitzoliver.com

## Practice Areas

Accounting & Professional  
Liability  
Business Litigation  
Class Action Defense  
Employment  
Franchise Litigation  
Products Liability  
Unfair Trade Practices & False  
Advertising

## Professional Profile

Kathy's practice focuses on employment defense and accounting-related malpractice work. She has spent the past decade defending some of the nation's largest companies in litigation across the United States. Since joining Berkowitz Oliver in 2001, Kathy has obtained judgments in favor of clients in employment discrimination and professional negligence cases filed in state and federal courts from Florida to California. She has also obtained numerous favorable findings against charges of discrimination filed with the Equal Employment Opportunity Commission and state agencies throughout the United States.

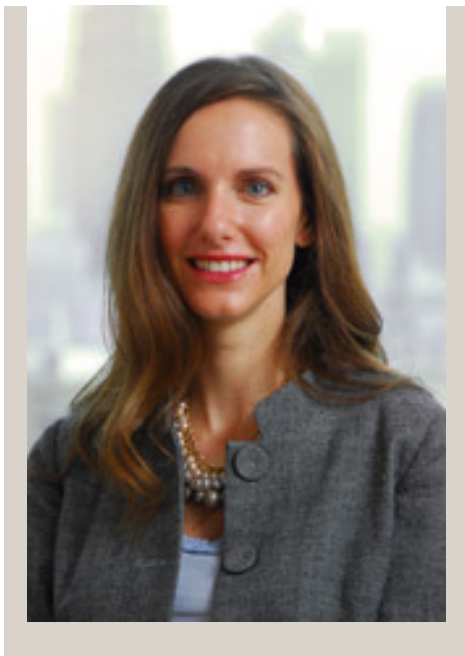
In addition, she has successfully briefed and argued cases before the Seventh, Eighth and Tenth Circuits for the U.S. Court of Appeals, the Missouri Court of Appeals and the Missouri Supreme Court.

Kathy also counsels clients on a daily basis with regard to employment matters, has conducted employee training on topics ranging from investigating harassment complaints to employee documentation and discharge and is a frequent speaker at seminars on a variety of employment topics. In addition to her employment and professional malpractice cases, she also has extensive experience in class action and single plaintiff product liability litigation and in negotiating employment agreements for highly-compensated employees.

Kathy received a Bachelor of Science from Iowa State University in 1995 and attended the University of Iowa College of Law, receiving her J.D. in 1998. She was elected The Order of the Coif and was an associate editor of the Iowa Law Review which published *The Note: Child Preference in Custody Decisions: Where We Have Been, Where We Are Going, Where We Should Go*. 83 IOWA L. REV. 437 (1998). Kathy is admitted to practice in the state and federal courts in Missouri (1998) and Kansas (1999), the Seventh, Eighth and Tenth Circuit Court of Appeals, the USDC for the Northern District of Illinois, and has been admitted *pro hac vice* in matters across the country.

Kathy is married, has two daughters, and enjoys dedicating time to a number of non-profits in the Kansas City area, including fundraising and outreach for The Children's Mercy Hospitals and Clinics.

# BERKOWITZOLIVER



**Kathleen M. Nemechek**

## Partner

816.627.0221  
knemechek@berkowitzoliver.com

## Practice Areas

Accounting & Professional  
Liability  
Business Litigation  
Class Action Defense  
Employment  
Franchise Litigation  
Products Liability  
Unfair Trade Practices & False  
Advertising

## Publications

The Note: *Child Preference in Custody Decisions: Where We Have Been, Where We Are Going, Where We Should Go*. 83 IOWA L. REV. 437 (1998)

## Distinctions

Children's Mercy Hospital Hands and Hearts Auxiliary Board Member

## Professional Memberships

Kansas Bar Association  
Missouri Bar Association  
Kansas City Metropolitan Bar Association

## Education

University of Iowa College of Law (J.D., 1998) *High Distinction*  
\*Order of the Coif  
\*Associate editor of the *Iowa Law Review*

Iowa State University (B.S., Community and Regional Planning, 1995) *Honors & Distinction*

## Admissions & Qualifications

Missouri, 1998  
Kansas, 1999  
U.S. District Court, Western District of Missouri  
U.S. District Court, District of Kansas  
U.S. District Court, Northern District of Illinois  
U.S. Court of Appeals for the Seventh Circuit  
U.S. Court of Appeals for the Eighth Circuit